

Skupnost-VSS Seminar
Golte 05.06.2025

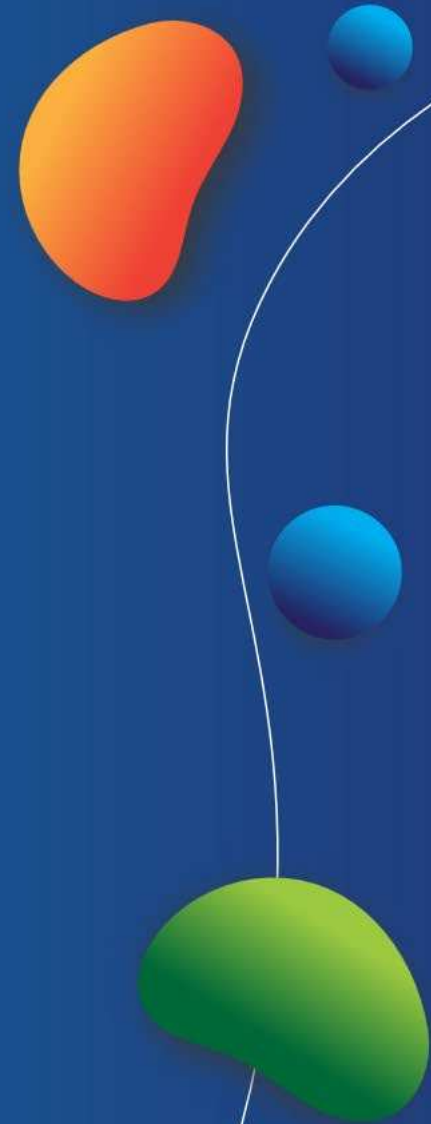
Re-Thinking Short- Cycle Higher Education for an age of AI

Anthony F. Camilleri



1

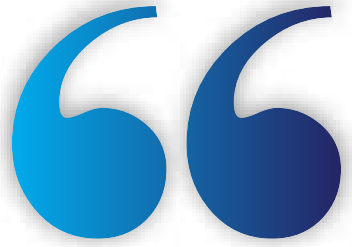
AI in Education Today



**We must
adjust to
the new
world
urgently...**

Share of higher education students using artificial intelligence (AI) tools for schoolwork worldwide as of July 2024





“

AI will become the calculator for Learning Content design

Inspired by...Erik Brynjolfsson – Professor of
Economics & Information Technology at Stanford



”

Agentic AI

GPT in 2024

your bar-quiz
friend who talks
too much



GPT in 2025

a team of
assistants ready
to help

In the short-Term AI will allow us to



Massively accelerate our ability to ingest and compare information



Massively accelerate the process of media creation



Replace many forms of Tutoring

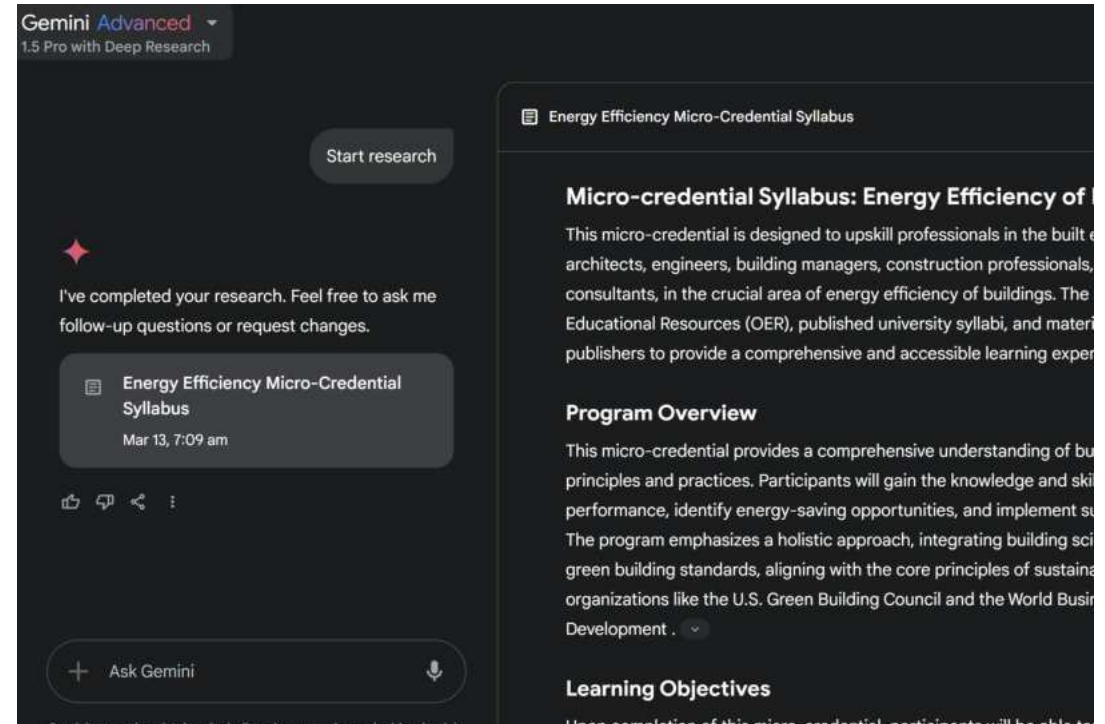


Lower Costs of Content Translation

Ingest and compare information

- We can now do AI queries on ‘academic content only’
- Searches can cross language barriers
- Content can be linked to specific sources

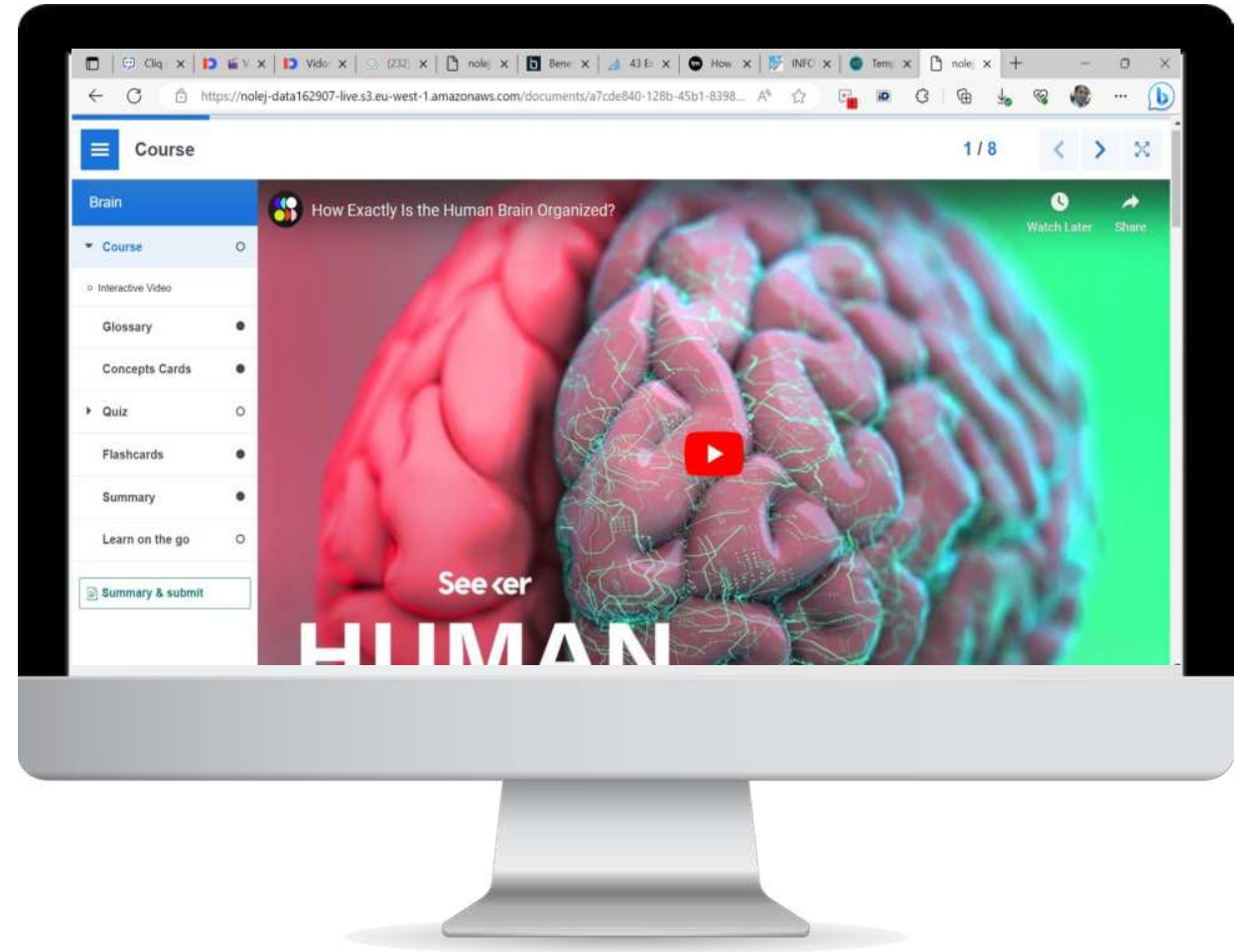
.....still invents stuff.....



Accelerate the Process of Media Creation

- Turn any set of information and knowledge into interactive courses including quizzes

.....still invents stuff.....



☰ **Glossary**

- Brain**
- ▶ Course ○
- Glossary** ●
- Concepts Cards ●
- ▶ Quiz ○
- Flashcards ●
- Summary ●
- Learn on the go ○

📄 **Summary & submit**

- > **Anatomy**
- > **Auditory cortex**
- > **Brainstem**
- > **Cerebellum**
- > **Cerebral cortex**
- > **Cerebrum**
- > **Cognition**
- > **Corpus callosum**
- > **Electroencephalography**

Quiz

-
- y ●
- ts Cards ●
-
- rds ●
- ry ●
- n the go ○

What is the name of the structure that connects the two sides of the brain?

- Prefrontal cortex
- Corpus Callosum
- Limbic system
- Pituitary gland

✔ Check



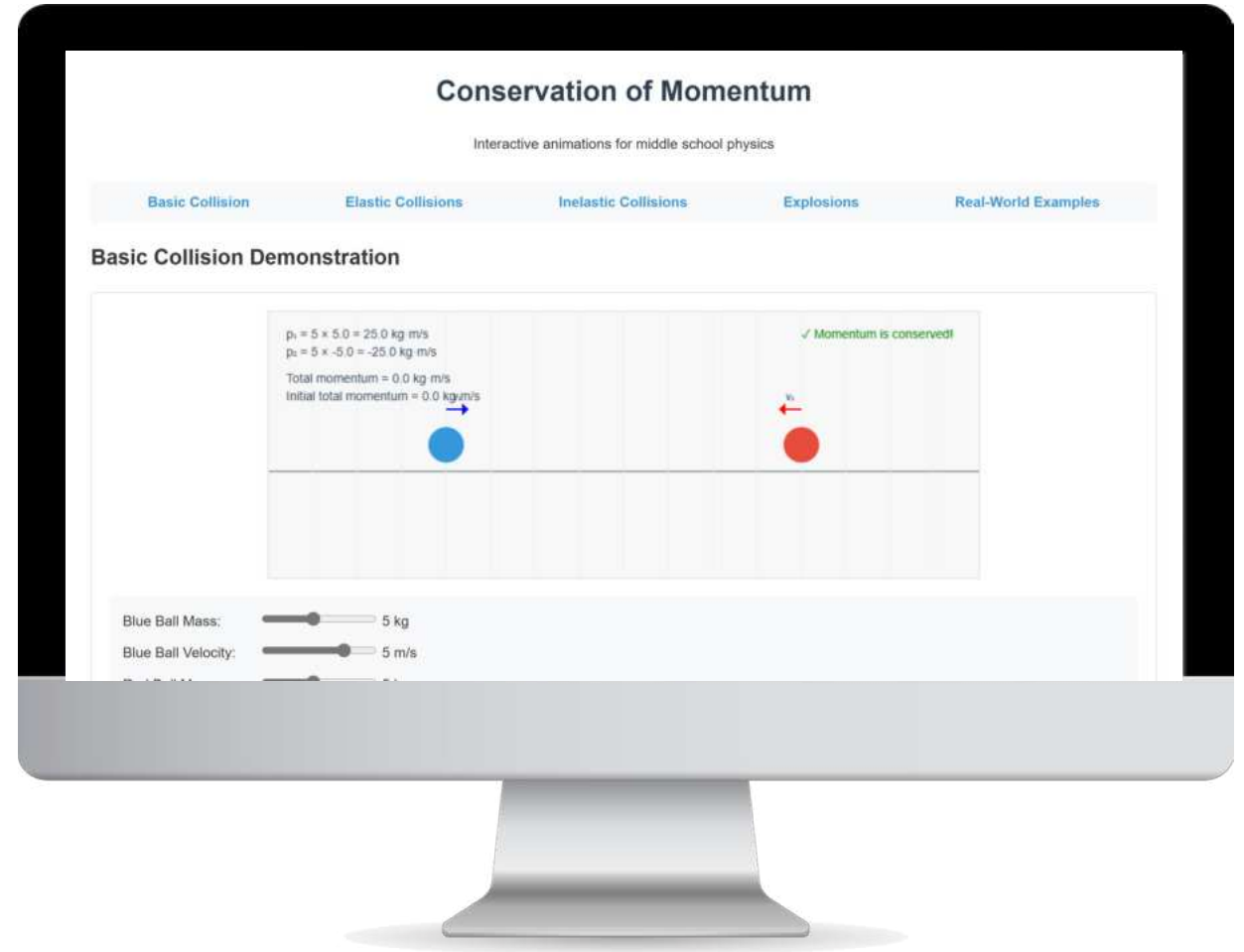
The cerebrum is also known as the ____ brain.

↻ Turn

Develop Full Courses including research

- Research Information
- Organise Information
- Build animations & quizzes

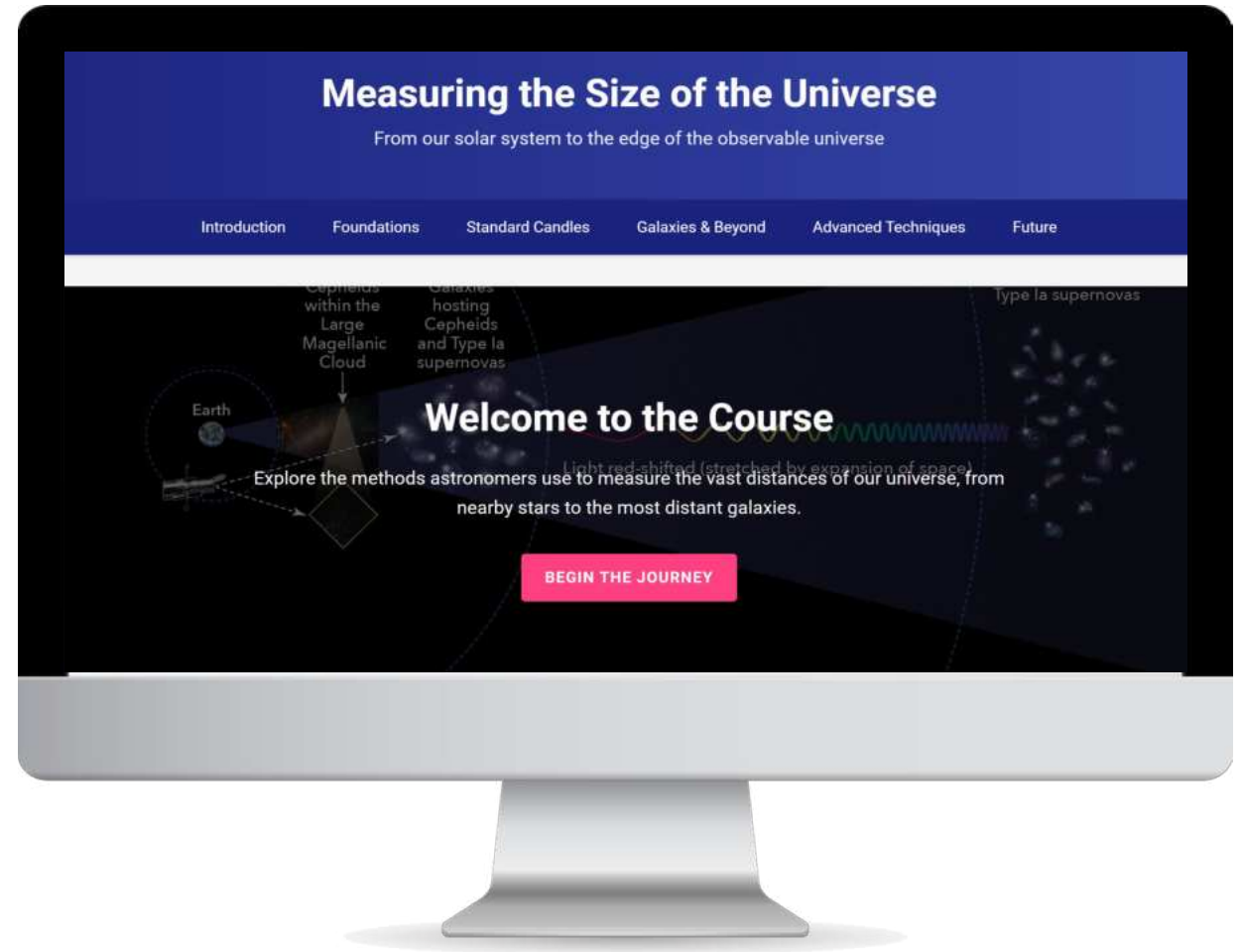
.....still invents stuff.....



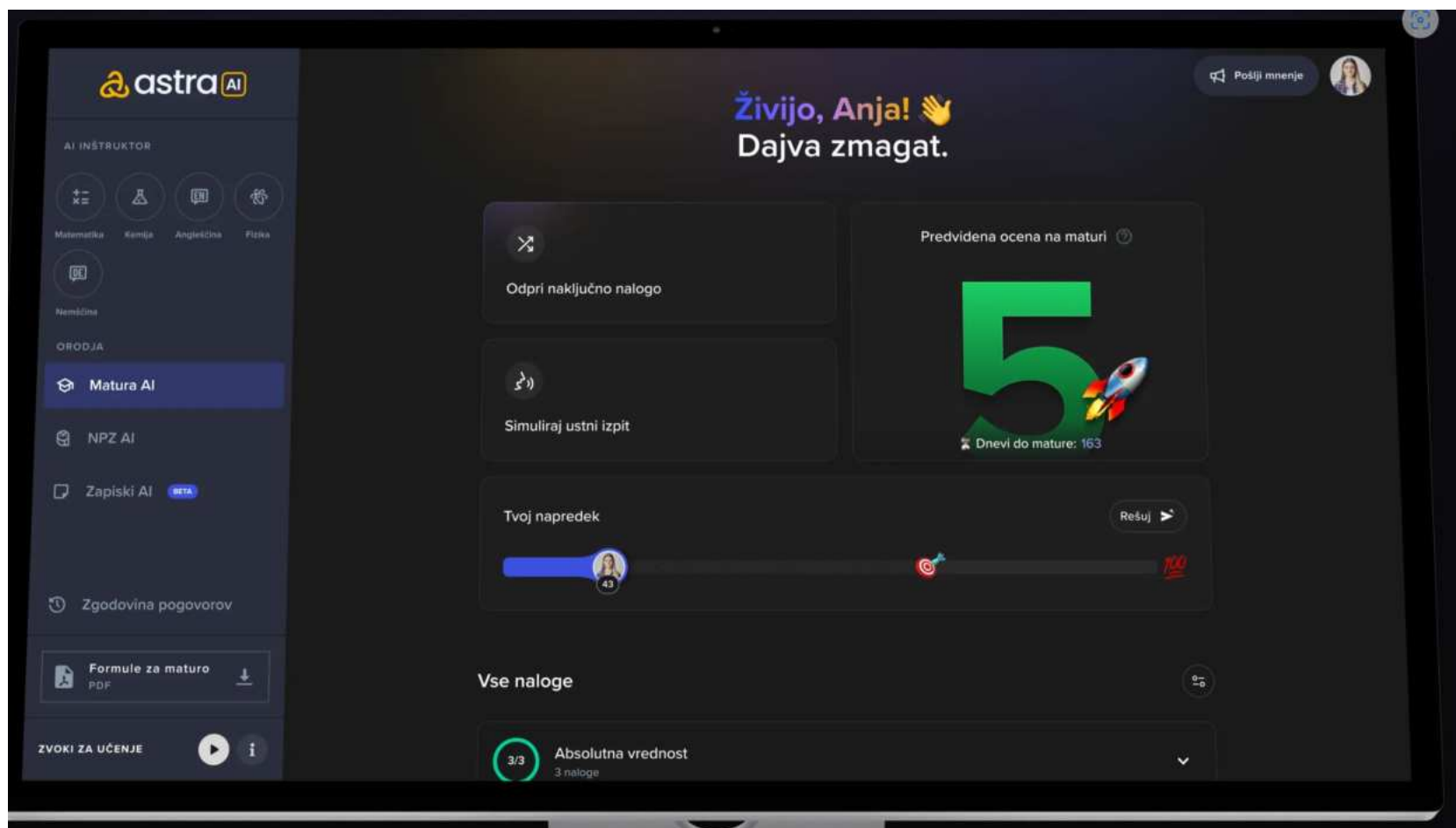
Develop Full Courses including research

- Research Information
- Organise Information
- Build animations & quizzes

.....still invents stuff.....



Replacing Tutoring



Lower Costs of Translation



.....still invents stuff.....

~~In the short-Term AI will~~ allows us to

Massively accelerate
our ability to ingest and
compare information

Integrate different materials and methods from
hundreds of courses

Massively accelerate
the process of media
creation

package learning in multiple formats: textbook,
stories, presentation, video

Replace many forms of
Tutoring

Make personalised tutoring part of every homework
assignment

Lower costs of
Translation

Enable new Forms of Multi-Lingual Learning

Agentic AI

GPT in 2024

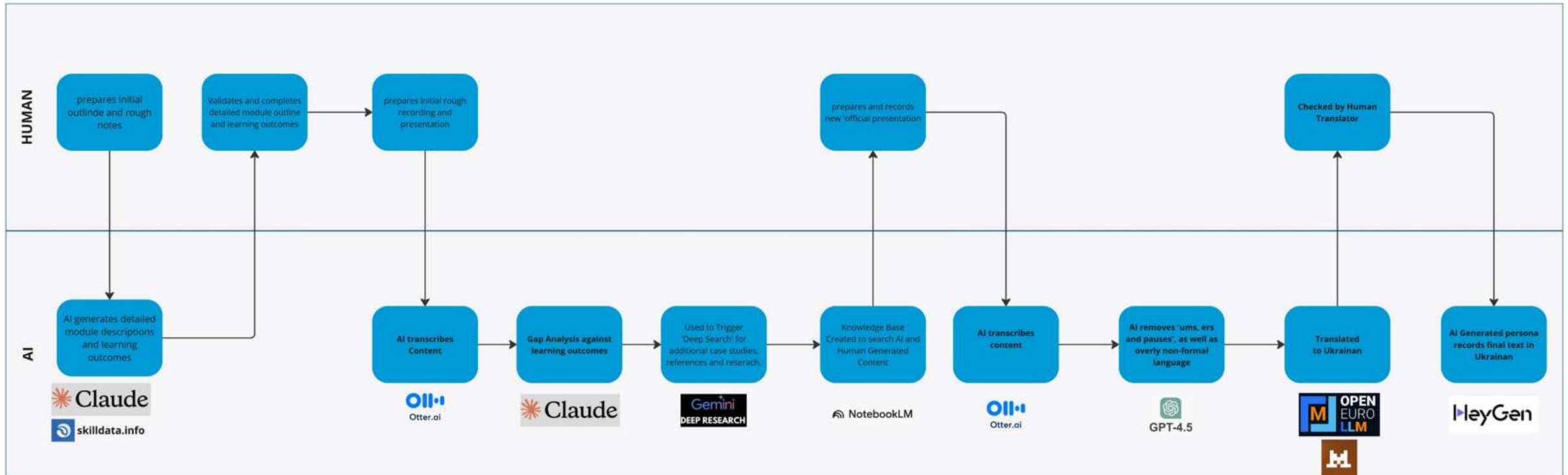
your bar-quiz
friend who talks
too much



GPT in 2025

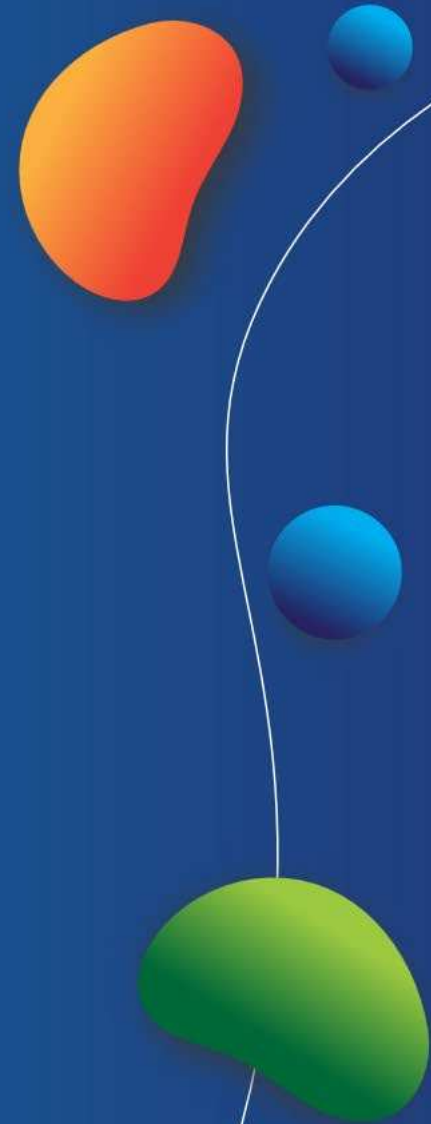
a team of
assistants ready
to help

...but if it invents stuff...?



2

AI more Broadly



May 28, 2025 - Technology

Column / Behind the Curtain

Behind the Curtain: A white-collar bloodbath



Jim VandeHei, Mike Allen

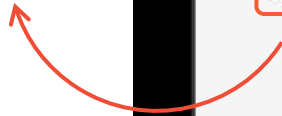
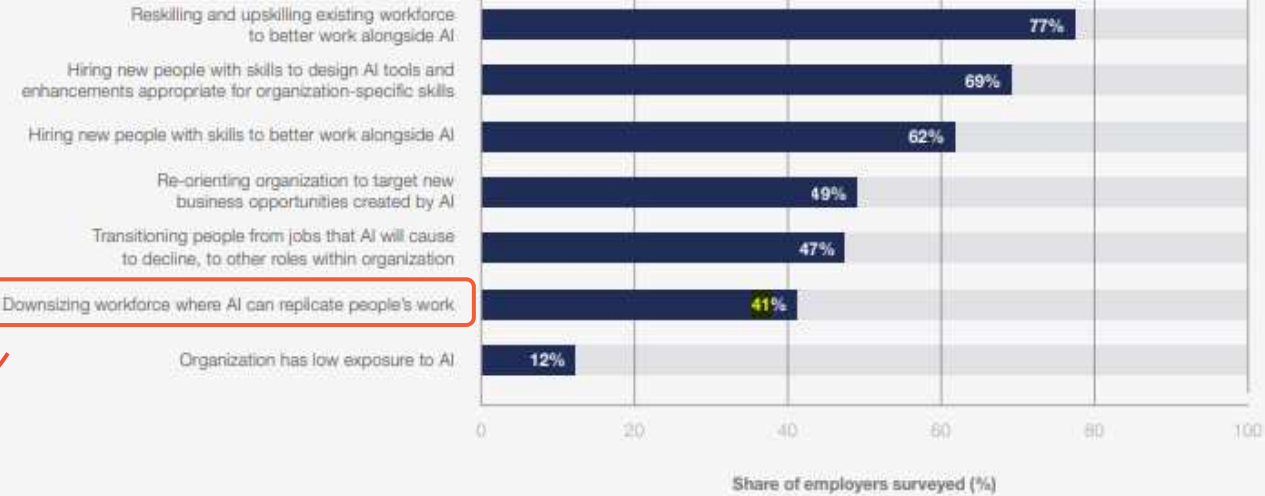


Dario Amodei — CEO of Anthropic, one of the world's most powerful creators of [artificial intelligence](#) — has a blunt, scary warning for the U.S. government and all of us:

- AI could wipe out *half* of all entry-level white-collar jobs — and spike unemployment to 10-20% in the next one to five years, Amodei told us in an interview from his San Francisco office.
- Amodei said AI companies and government need to stop "sugar-coating" what's coming: the possible mass elimination of jobs across technology, finance, law, consulting and other white-collar professions, especially entry-level gigs.

FIGURE 4.14 Workforce strategy in response to AI, 2025-2030

Share of employers surveyed planning to implement the stated strategy in response to AI's increasing capability and prevalence.

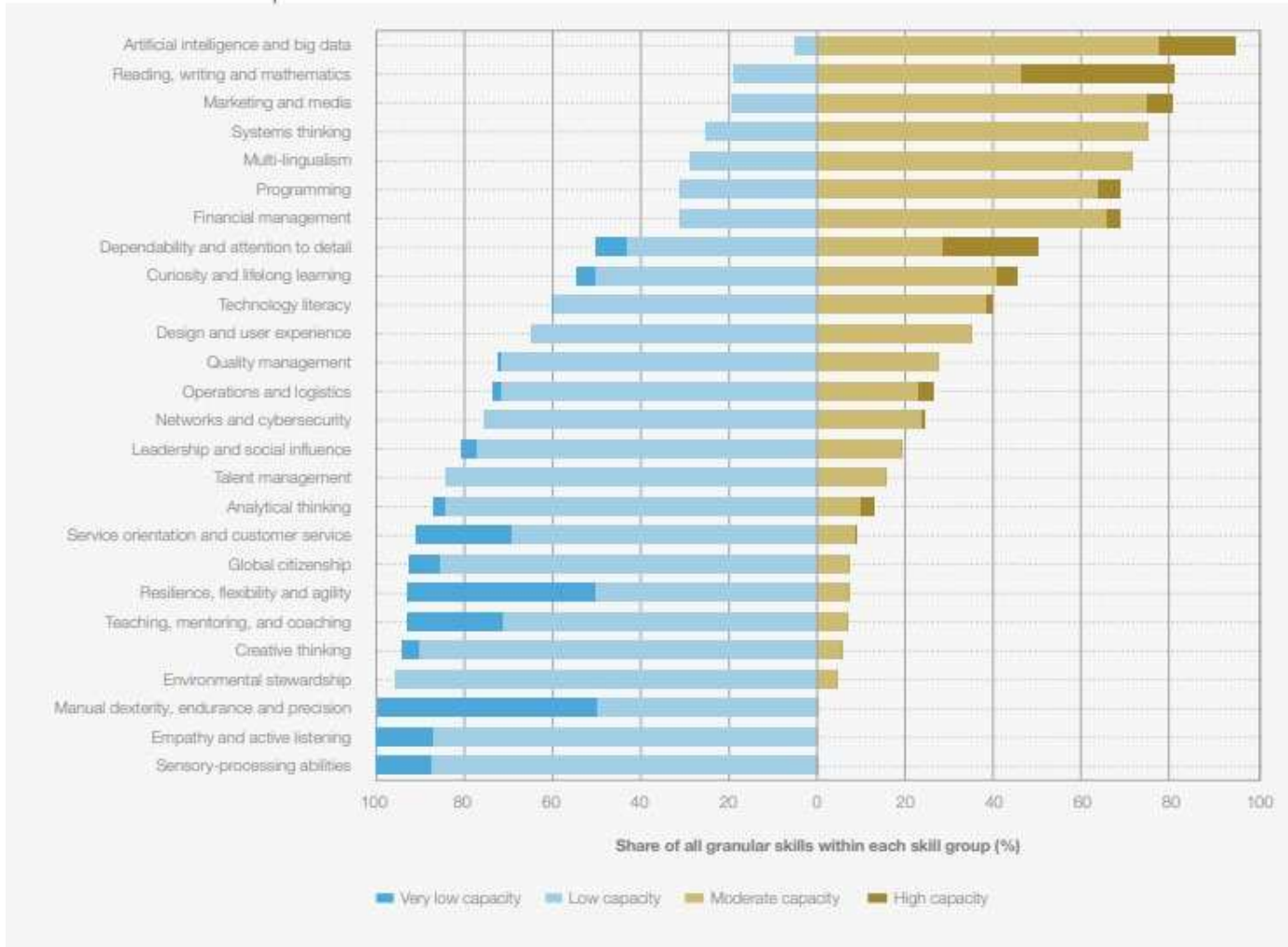


Source: World Economic Forum, Future of Jobs Survey 2024

FIGURE B3.1

Current capacity for substitution by Generative AI, by skill group

Capacity of GenAI substituting a human in performing a given skill as a percentage share of all granular skills within each skill group.
 Analysis based on GPT-4o; with over 2800 granular skills from the Indeed database as of August 2024.



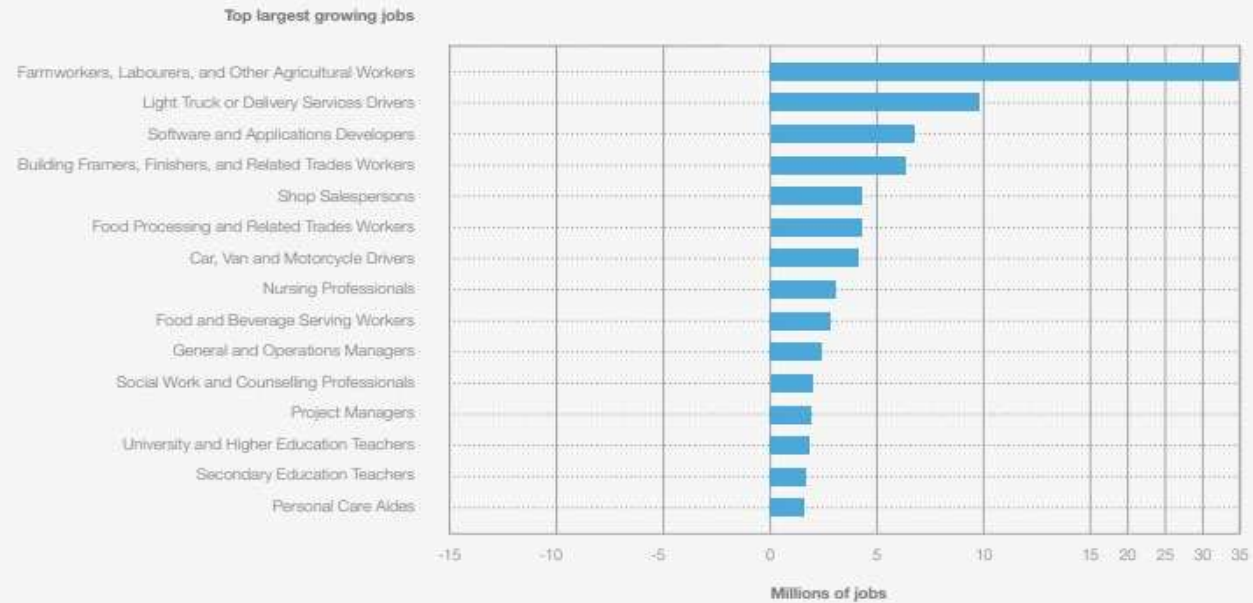
Source: Indeed analysis: World Economic Forum, Global Skills Taxonomy

Note: No skills have been rated with “very high capacity” for substitution



FIGURE 2.4 Largest growing and declining jobs, 2025-2030

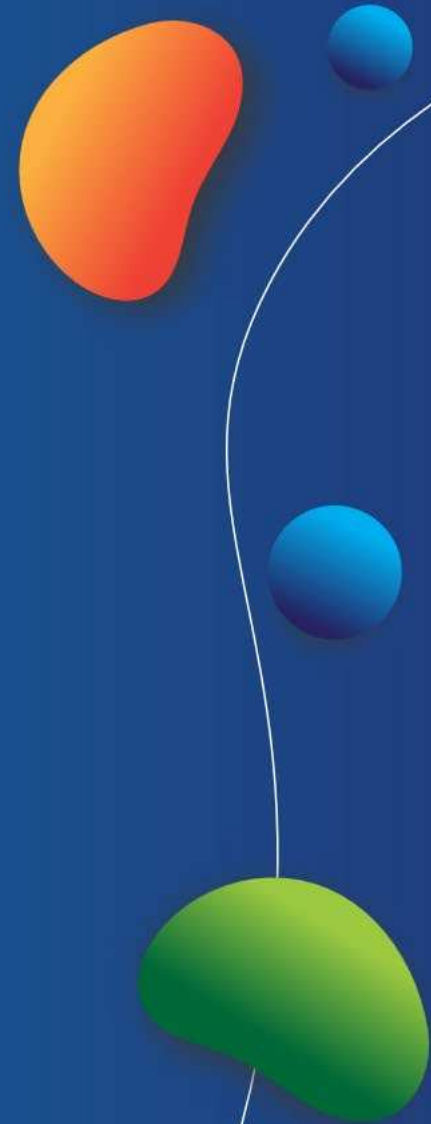
Top jobs, ordered by largest net job growth and decline, in absolute terms, calculated based on ILO occupation employment statistics and expected net growth, reported by employers surveyed.



Source: World Economic Forum

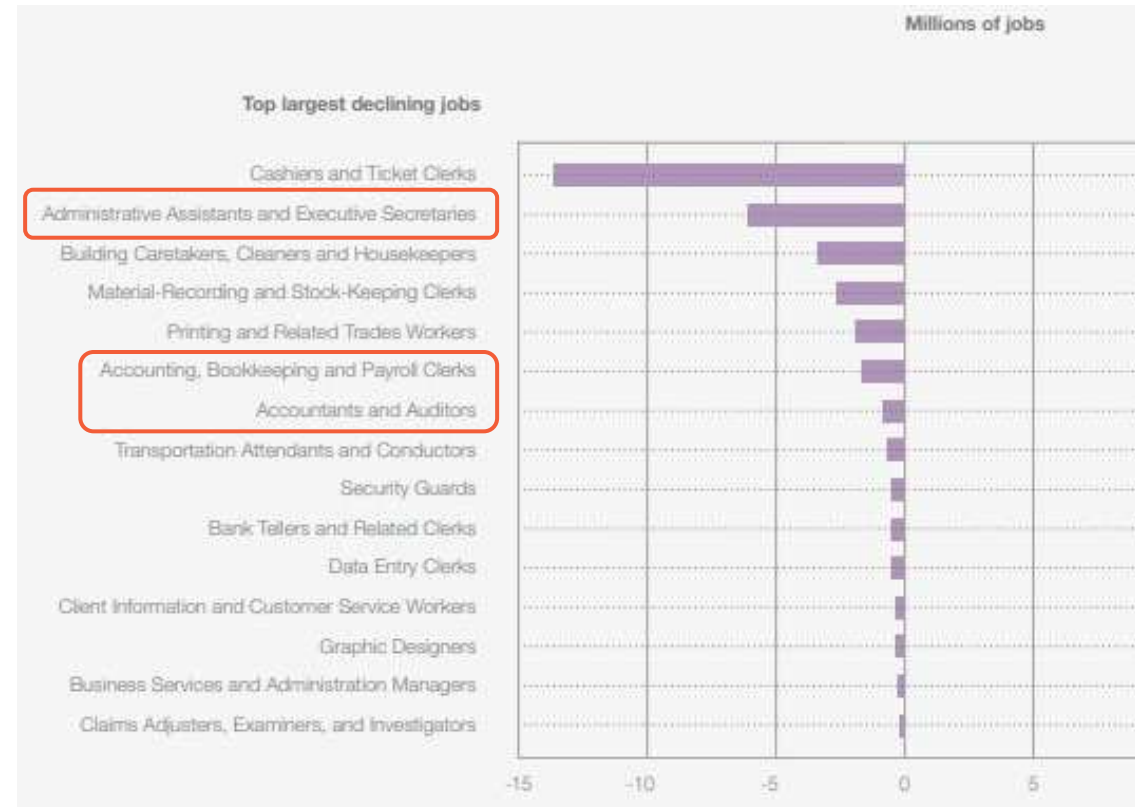
3

**What does this mean
for SCHE?**



Lean for the Future

- Strong and Continuous Occupational Trend Forecasting
- Trim Course List **before** jobs dry up
- Do Not Prepare Students for Occupations that will not exist in 5 years.



Position SCHE as an alternative to Bachelors for Labour Market Entry

- Destruction of Entry-Level white collar jobs means bachelors gives reduced access to employment
- Bachelors must become either a gateway to higher studies or more vocational in nature
- Short Cycle Higher Education professions remain in strong and increasing demand

Position SCHE as an alternative to Bachelors for Labour Market Entry



Destruction of Entry-Level white-collar jobs means bachelors gives reduced access to employment

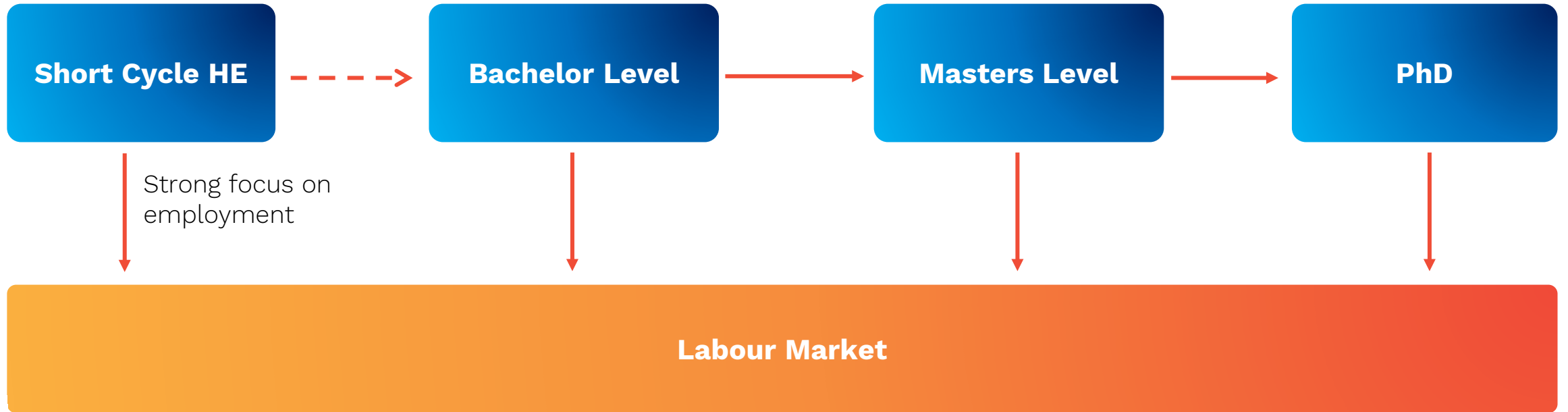


Bachelors must become either a gateway to higher studies or more vocational in nature

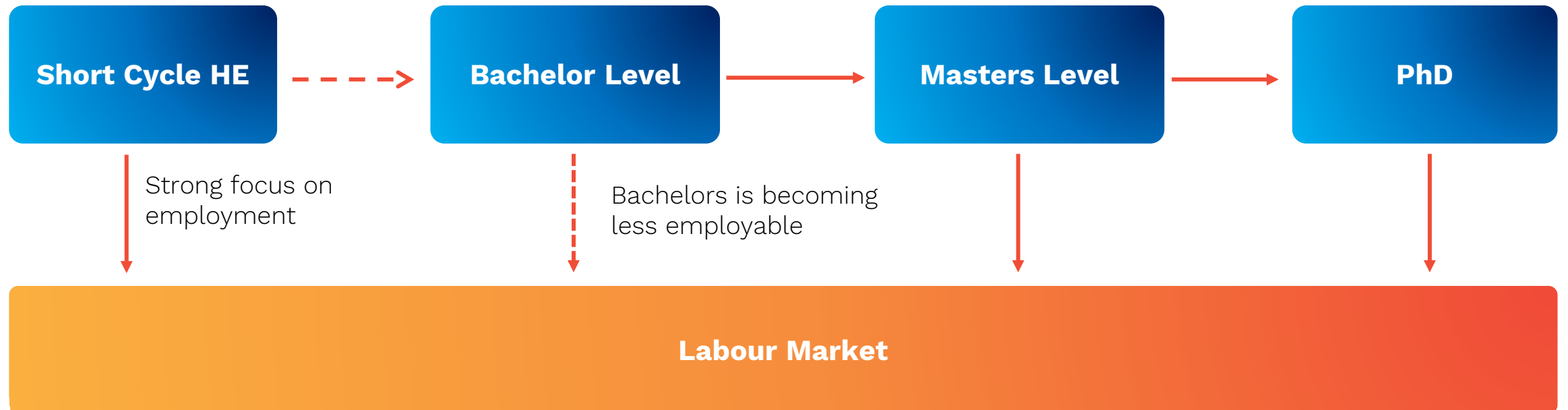


Short Cycle Higher Education professions remain in strong and increasing demand

Educational Structure Now



Educational Structure Now



Position for More Flexible LLL Pathways



Integrate (AI) Management Skills in all Courses



**From doing
discrete tasks**



**To managing
large teams of
independent agents**

Focus on Work-Integrated Learning

Teaches necessary skills better

- ‘Factual’ learning is reducing in importance
- Production of ‘knowledge artefacts’ is less labour intensive

Predictive nature

- Work is evolving **much** faster than educational opportunities

Create Innovation Labs

- We need to examine new tools in employment and learning
- We need to streamline these into syllabi
- We need to prepare curricula for jobs of the future
- SCHE needs to pool research & innovation and distribute to schools (set the TKNIKA model)

Source: Generative AI for Software Practitioners - Scientific Figure on ResearchGate. Available from: https://www.researchgate.net/figure/Time-to-reach-100-million-users-for-different-technologies-in-months-after-initial_fig1_372212988 [accessed 4 Jun 2025]





Knowledge
INNOVATION
Centre

Let's Start the Conversation

Thanks for your attention



Knowledge
INNOVATION
Centre

Contact us



info@knowledgeinnovation.eu



<https://knowledgeinnovation.eu/>



[+386 5991 7990](tel:+38659917990)

Our ideas, our work, and our passion are what make KIC tick. We are pushing boundaries to deliver exceptional results for you, our clients and partners.

